

PERFORMANCE CURVE

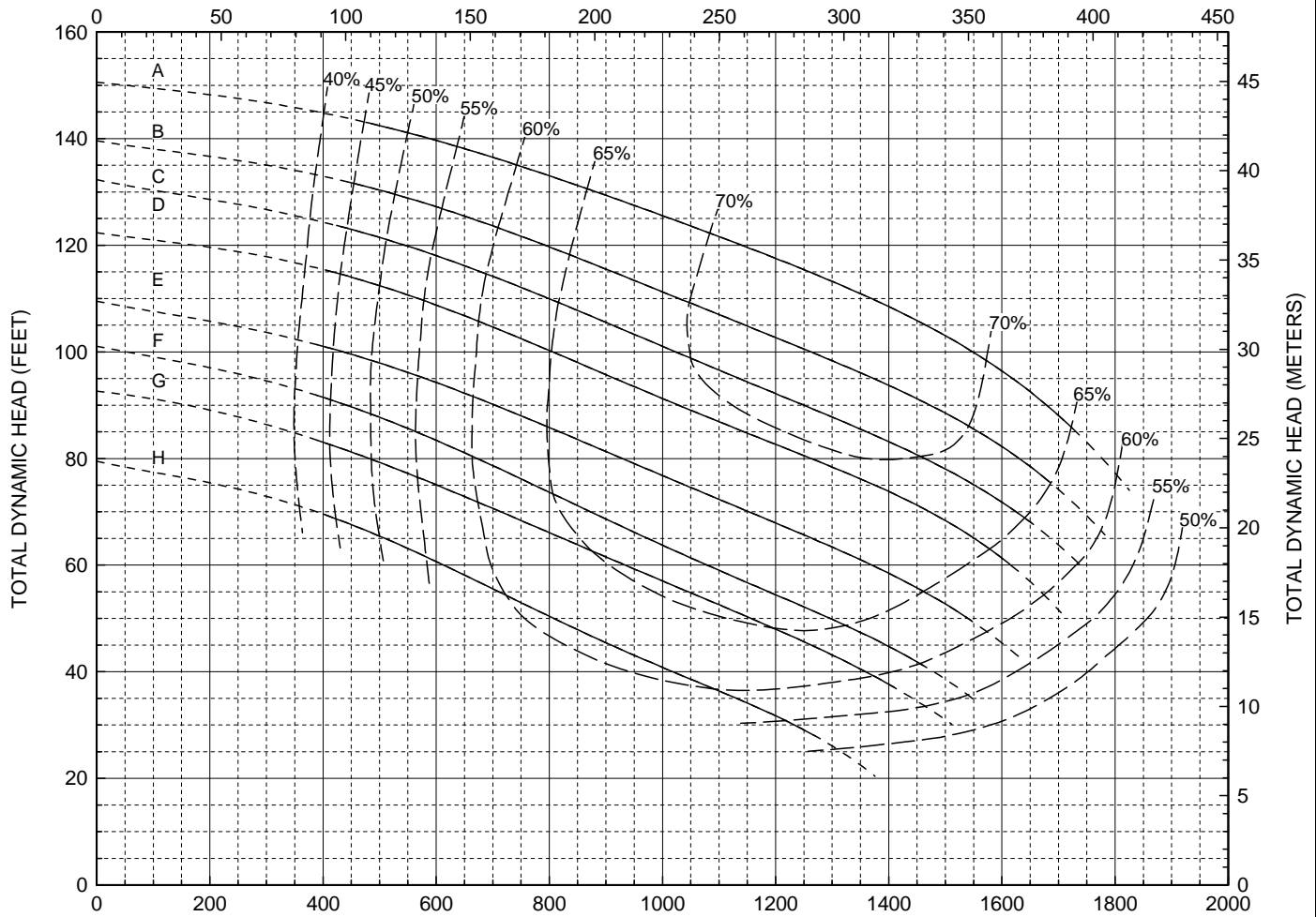
**Models:
S4T**

**6-Blade Impeller
4" Discharge**

CURVE	POWER (HP/KW)	SPEED (RPM)	IMPELLER DIAMETER
A	60 / 45	1770	11.80" (300mm)
B	50 / 37	1770	11.30" (287mm)
C	50 / 37	1770	11.00" (279mm)
D	40 / 30	1740	10.80" (274mm)
E	40 / 30	1740	10.30" (262mm)
F	30 / 22	1755	9.90" (251mm)
G	25 / 19	1755	9.50" (241mm)
H	20 / 15	1750	8.90" (226mm)

DO NOT OPERATE PUMP IN DOTTED PORTION OF CURVES. PUMPS MAY EXCEED HP SHOWN IF OPERATED IN DOTTED PORTION OF CURVE. CURVES ARE SUBJECT TO CHANGE WITHOUT NOTICE. EFFICIENCIES SHOWN ARE NOMINAL BOWL. GUARANTEED MINIMUM EFFICIENCIES PER H.I. LEVEL A.

CAPACITY (CUBIC METERS PER HOUR)



CAPACITY (U.S. GALLONS PER MINUTE)