



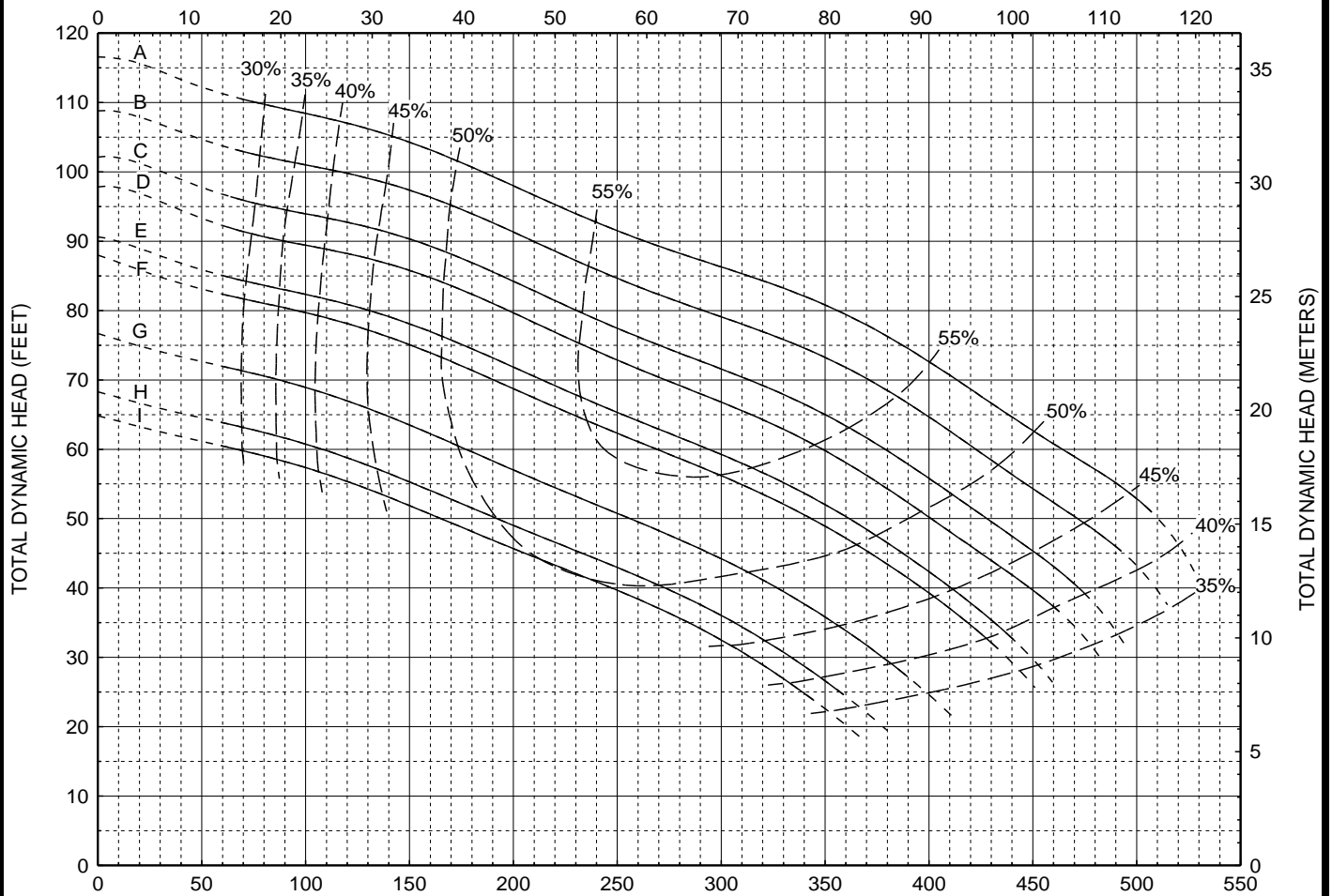
Models:
SE3P
S3P

Back-Pull-Out Casing
3-Blade Impeller
3" Discharge

CURVE	POWER (HP)	SPEED (RPM)	IMPELLER DIAMETER
A	20*	1740	10.30" (262 mm)
B	15	1745	10.00" (254 mm)
C	15	1745	9.70" (246 mm)
D	15	1745	9.50" (241 mm)
E	15	1745	9.20" (234 mm)
F	10	1755	9.00" (229 mm)
G	10	1755	8.50" (216 mm)
H	7.5	1730	8.20" (208 mm)
I	7.5	1730	8.00" (203 mm)

DO NOT OPERATE PUMP IN DOTTED PORTION OF CURVES. PUMPS MAY EXCEED HP SHOWN IF OPERATED IN DOTTED PORTION OF CURVE. CURVES ARE SUBJECT TO CHANGE WITHOUT NOTICE. EFFICIENCIES SHOWN ARE NOMINAL BOWL. GUARANTEED MINIMUM EFFICIENCIES PER H.I. LEVEL A. *EXCEEDS 15 HP AFTER 500 GPM.

CAPACITY (CUBIC METERS PER HOUR)



CAPACITY (U.S. GALLONS PER MINUTE)