



PERFORMANCE CURVE

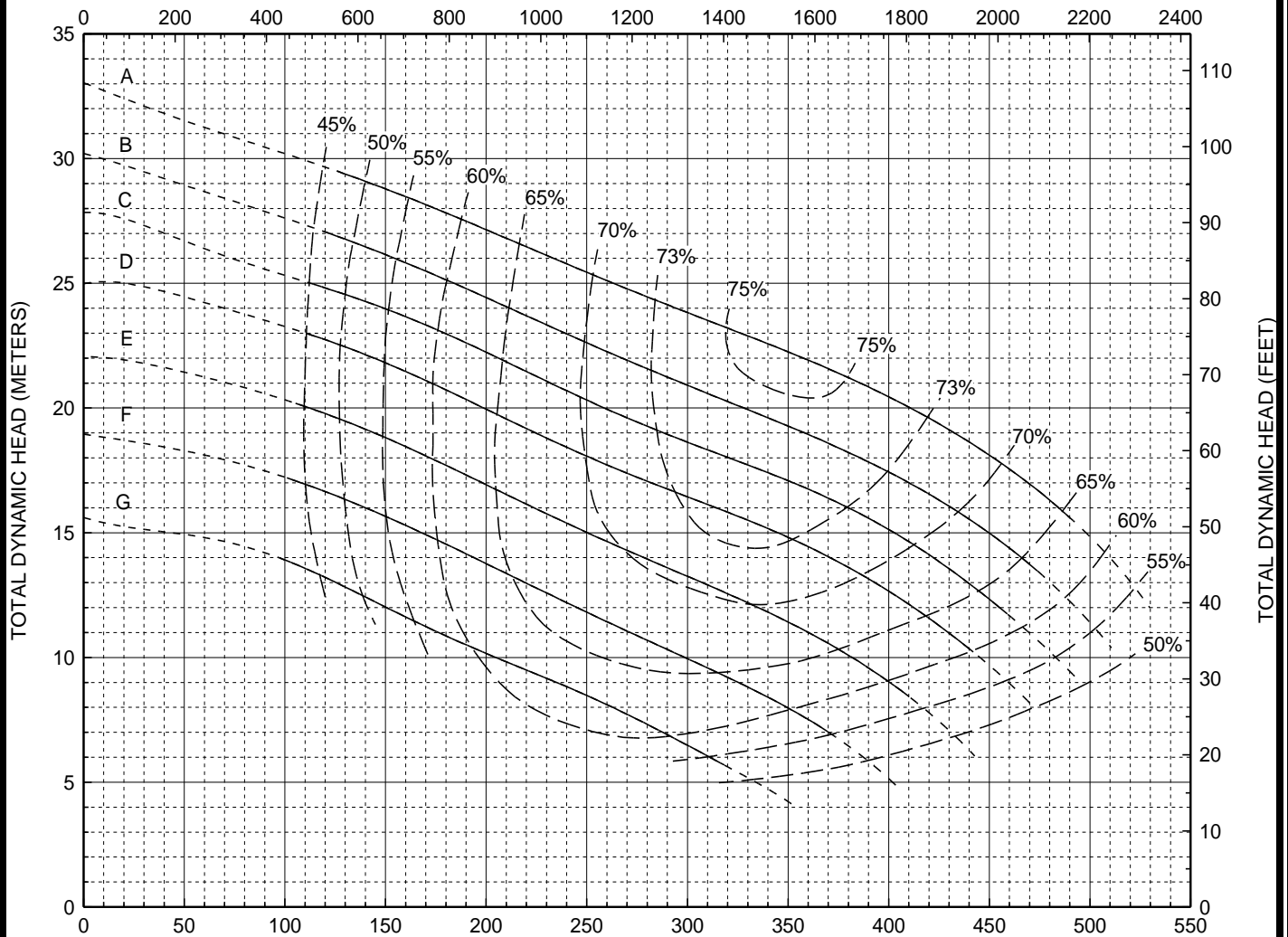
Models:
V6U
V6UR

4-Blade Impeller
6" Discharge
Tangential Casing

CURVE	POWER (HP/KW)	SPEED (RPM)	IMPELLER DIAMETER
A	50 / 37	1460	11.80" (300 mm)
B	40 / 30	1460	11.30" (287 mm)
C	40 / 30	1460	10.90" (277 mm)
D	30 / 22	1460	10.50" (267 mm)
E	25 / 18.5	1460	10.00" (254 mm)
F	20 / 15	1460	9.40" (239 mm)
G	15 / 12	1460	8.80" (224 mm)

DO NOT OPERATE PUMP IN DOTTED PORTION OF CURVES. PUMPS MAY EXCEED HP SHOWN IF OPERATED IN DOTTED PORTION OF CURVE. CURVES ARE SUBJECT TO CHANGE WITHOUT NOTICE. EFFICIENCIES SHOWN ARE NOMINAL BOWL. GUARANTEED MINIMUM EFFICIENCIES PER H.I. LEVEL A.

CAPACITY (U.S. GALLONS PER MINUTE)



CAPACITY (CUBIC METERS PER HOUR)