

PERFORMANCE CURVE

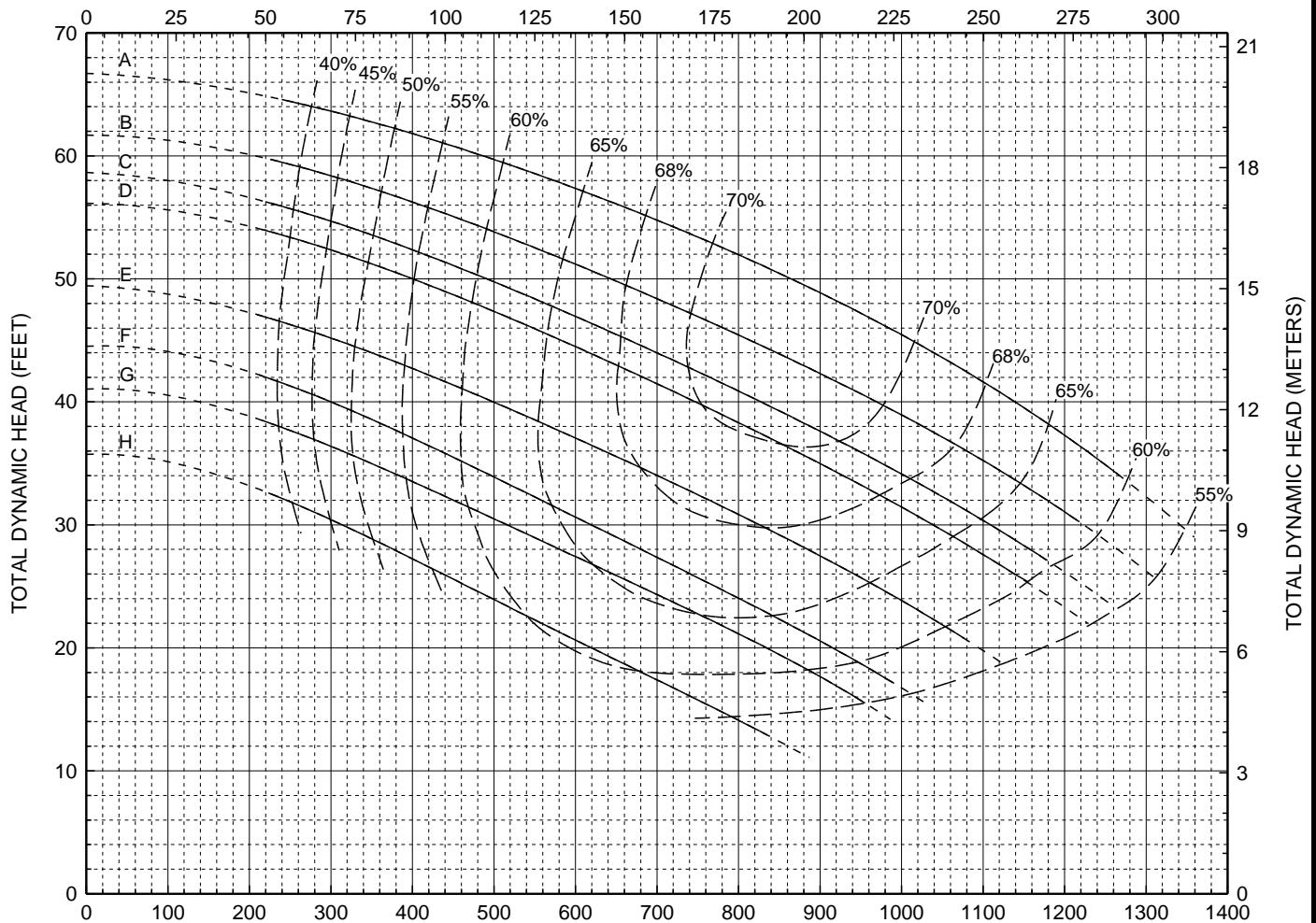
Models:
V4T
V4TR

6-Blade Impeller
4" Discharge

CURVE	POWER (HP/KW)	SPEED (RPM)	IMPELLER DIAMETER
A	20 / 15	1180	11.80" (300mm)
B	15 / 11	1180	11.30" (287mm)
C	15 / 11	1180	11.00" (279mm)
D	15 / 11	1180	10.80" (274mm)
E	10 / 7.5	1170	10.30" (262mm)
F	10 / 7.5	1170	9.90" (251mm)
G	7.5 / 5.5	1175	9.50" (241mm)
H	7.5 / 5.5	1175	8.90" (226mm)

DO NOT OPERATE PUMP IN DOTTED PORTION OF CURVES. PUMPS MAY EXCEED HP SHOWN IF OPERATED IN DOTTED PORTION OF CURVE. CURVES ARE SUBJECT TO CHANGE WITHOUT NOTICE. EFFICIENCIES SHOWN ARE NOMINAL BOWL. GUARANTEED MINIMUM EFFICIENCIES PER H.I. LEVEL A.

CAPACITY (CUBIC METERS PER HOUR)



CAPACITY (U.S. GALLONS PER MINUTE)

Form V242XE-4T¹-1170 7/17