



PERFORMANCE CURVE

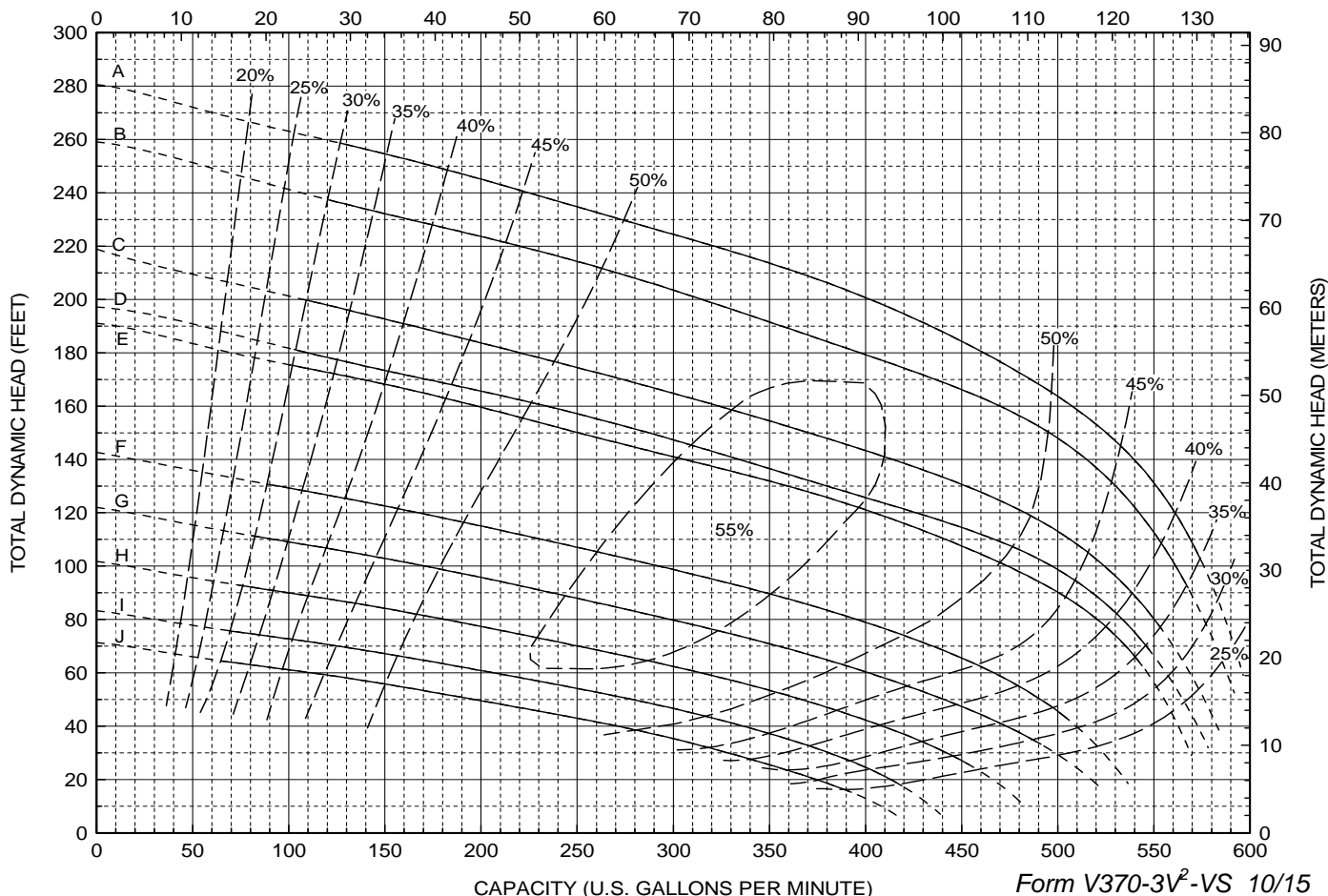
Models:
HE3V6
PE3V6
SE3V / S3V**

Back-Pull-Out Casing
3-Blade Impeller
3" Discharge
6" Suction

CURVE	POWER (HP/KW)	SPEED (RPM)	IMPELLER DIAMETER
A	50* / 37	3560	8.00" (203 mm)
B	40 / 30	3400	8.00" (203 mm)
C	30 / 22	3100	8.00" (203 mm)
D	30 / 22	2950	8.00" (203 mm)
E	25 / 18.5	2900	8.00" (203 mm)
F	20 / 15	2500	8.00" (203 mm)
G	15 / 11	2300	8.00" (203 mm)
H	15 / 11	2100	8.00" (203 mm)
I	10 / 7.5	1900	8.00" (203 mm)
J	7.5 / 5.5	1750	8.00" (203 mm)

DO NOT OPERATE PUMP IN DOTTED PORTION OF CURVES. PUMPS MAY EXCEED HP SHOWN IF OPERATED IN DOTTED PORTION OF CURVE. CURVES ARE SUBJECT TO CHANGE WITHOUT NOTICE. EFFICIENCIES SHOWN ARE NOMINAL BOWL. GUARANTEED MINIMUM EFFICIENCIES PER H.I. LEVEL A. *EXCEEDS 40 HP BEYOND 480 GPM. **SE3V/S3V CONFIGURATIONS ARE NOT AVAILABLE AT 50 HP.

CAPACITY (CUBIC METERS PER HOUR)



CAPACITY (U.S. GALLONS PER MINUTE)

Form V370-3V²-VS 10/15