



Vaughan

E Series Vertical 50 Hz Chopper Pump PERFORMANCE CURVE

Models:

C6U (max 4' long)

V6U

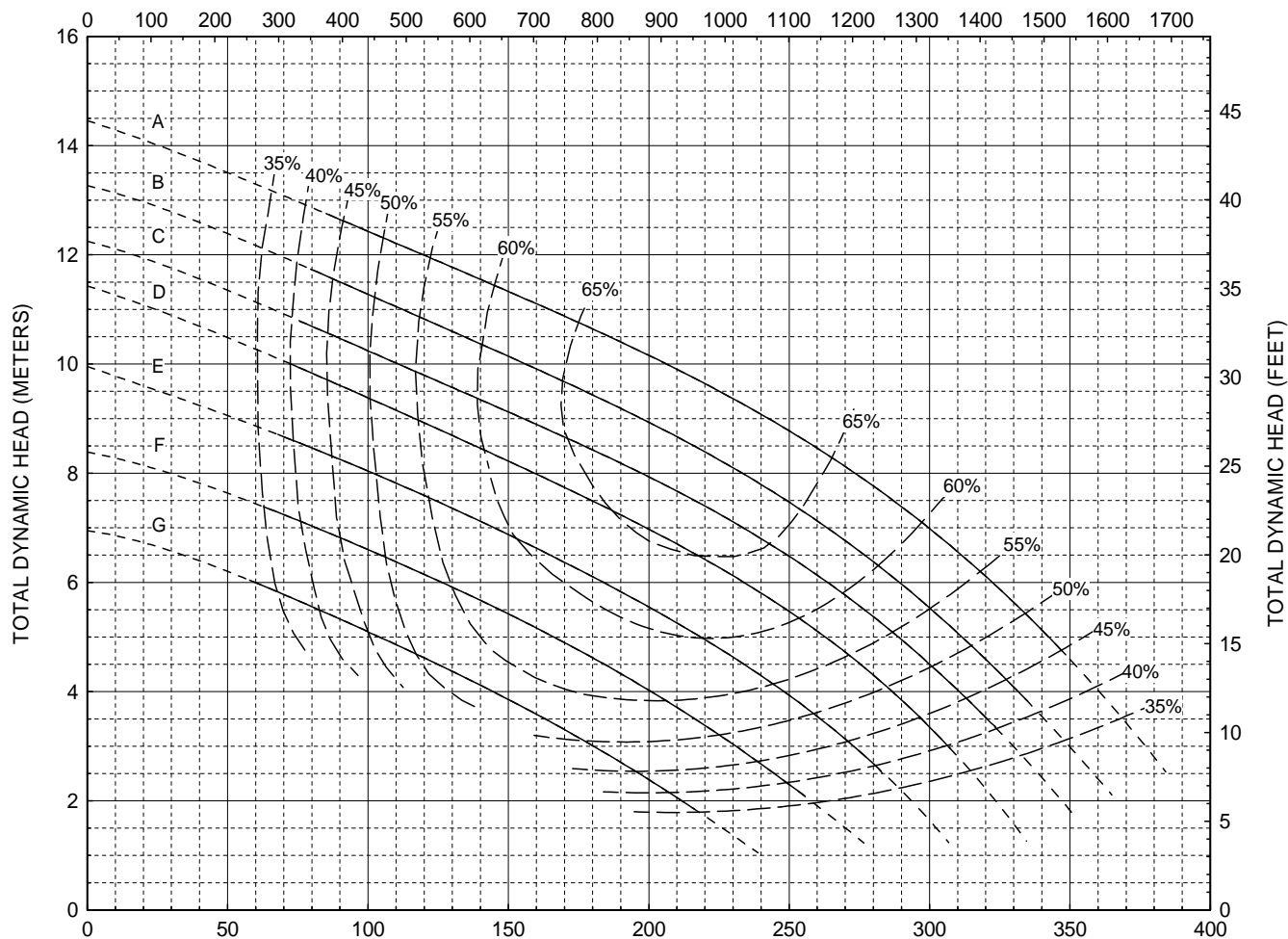
V6UR

**4 Blade Impeller
6" Discharge
Tangential Casing**

CURVE	POWER (HP/KW)	SPEED (RPM)	IMPELLER DIAMETER
A	15 / 11	970	11.80" (300 mm)
B	15 / 11	970	11.30" (287 mm)
C	10 / 7.5	970	10.90" (277 mm)
D	10 / 7.5	970	10.50" (267 mm)
E	7.5 / 5.5	970	10.00" (254 mm)
F	7.5 / 5.5	970	9.40" (239 mm)
G	5 / 4	970	8.80" (224 mm)

DO NOT OPERATE PUMP IN DOTTED PORTION OF CURVES. CURVES SUBJECT TO CHANGE WITHOUT NOTICE. EFFICIENCIES SHOWN ARE NOMINAL. GUARANTEED MINIMUM EFFICIENCIES PER H.I. LEVEL B. ADD 5 HP FOR CANTILEVER MODELS.

CAPACITY (U.S. GALLONS PER MINUTE)



CAPACITY (CUBIC METERS PER HOUR)

Form V242XE-V6V-970 6/11