



# Vaughan

## Vaughan E Series Vertical Chopper Pump PERFORMANCE CURVE

### Models:

**C6X** (max 3' long)

**V6X**

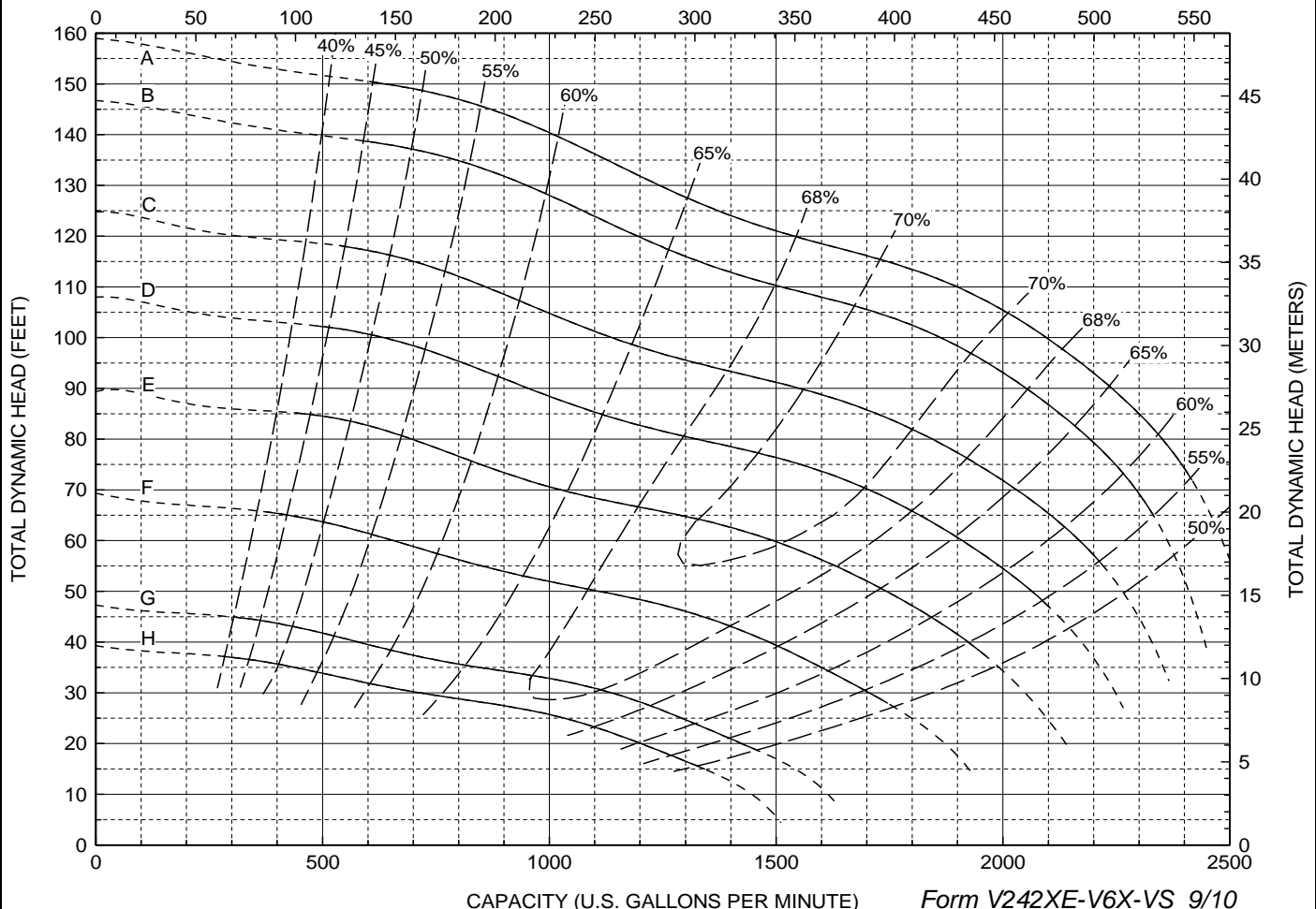
**V6XR**

**6 Blade Impeller  
6" Discharge  
Tangential Casing  
Variable Speed Curve**

CURVE	POWER (HP/KW)	SPEED (RPM)	IMPELLER DIAMETER
A	100/75	1785	11.80" (300 mm)
B	75/55	1715	11.80" (300 mm)
C	60/45	1580	11.80" (300 mm)
D	50/37	1470	11.80" (300 mm)
E	40/30	1340	11.80" (300 mm)
F	25/18.5	1175	11.80" (300 mm)
G	15/11	970	11.80" (300 mm)
H	15/11	870	11.80" (300 mm)

DO NOT OPERATE PUMP IN DOTTED PORTION OF CURVES. CURVES SUBJECT TO CHANGE WITHOUT NOTICE. EFFICIENCIES SHOWN ARE NOMINAL. GUARANTIED MINIMUM EFFICIENCIES PER H.I. LEVEL B. ADD 5HP FOR CANTILEVER MODELS.

CAPACITY (CUBIC METERS PER HOUR)



CAPACITY (U.S. GALLONS PER MINUTE)

Form V242XE-V6X-VS 9/10