



Vaughan E Series Chopper Pump PERFORMANCE CURVE

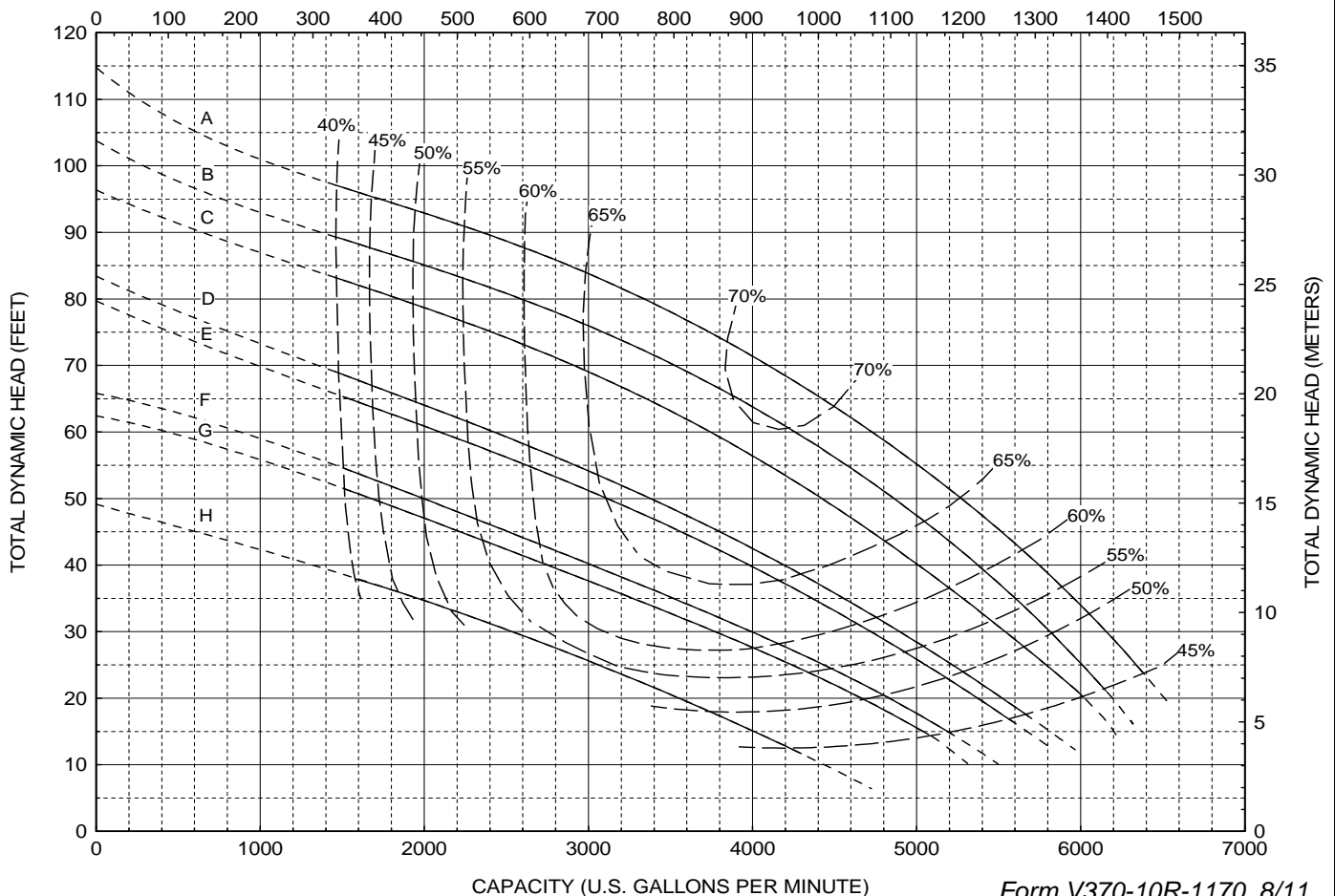
**Models:
SE10R
S10R**

**Back-Pull-Out Casing
3-Blade Impeller
10" Discharge
12" Suction**

CURVE	POWER (HP/KW)	SPEED (RPM)	IMPELLER DIAMETER
A	125 / 90	1175	16.00" (406 mm)
B	100 / 75	1165	15.50" (394 mm)
C	100 / 75	1165	15.00" (381 mm)
D	100 / 75	1165	14.00" (356 mm)
E	75 / 55	1170	13.70" (348 mm)
F	75 / 55	1170	13.00" (330 mm)
G	60 / 45	1170	12.60" (320 mm)
H	50 / 37	1185	12.00" (308 mm)

DO NOT OPERATE PUMP IN DOTTED PORTION OF CURVES. CURVES ARE SUBJECT TO CHANGE WITHOUT NOTICE. CURVES ARE BASED ON SUBMERSIBLE MOTOR SPEEDS. EFFICIENCIES SHOWN ARE NOMINAL BOWL. GUARANTEED MINIMUM EFFICIENCIES PER H.I. LEVEL B.

CAPACITY (CUBIC METERS PER HOUR)



CAPACITY (U.S. GALLONS PER MINUTE)

Form V370-10R-1170 8/11